

Dynamic Structural Transformation for the Analysis of Distillation Control Structures

Moonyong Lee and Sunwon Park

Department of Chemical Engineering, KAIST, Seoul 305-701, Korea

One of the most popular approaches to controlling multi-variable systems in chemical processes may be to use multiloop SISO (single-input/single-output) control. One of the major concerns of this approach is to find the best control structure among various alternatives. Structural transformation is very useful for analyzing different control structures, because knowledge of the properties of any base control structure makes it possible to investigate various arbitrary structures without any further experiments or modeling. If the complete open-loop transfer functions (COTF's) G and D of a base structure are available, transformation into an arbitrary structure can be made straightforwardly using the relationships between inputs of the base structure and inputs of the arbitrary structure. For distillation columns, however, it is difficult to find the COTF's experimentally, because slow composition dynamics and fast inventory dynamics exist simultaneously. When we make all the loops open and introduce a step change in a manipulated variable to find the COTF's, inventory outputs violate operational constraints long before composition outputs approach the steady state.

For this reason, the modified open-loop transfer functions (MOTF's) have been used commonly instead of the COTF's. By "modified open loop" we mean that composition loops are open while all inventory loops are closed. Indeed, most published dynamic models for distillation columns use the MOTF's. Another important reason to use the MOTF's is that there are only few pairing tools and decoupler design methods to handle the COTF's including integrating dynamics.

There have been several researches on transformation of distillation control structure (Skogestad and Morari, 1987; Häggblom and Waller, 1988, 1990; Yang et al., 1990). Häggblom and Waller (1988, 1990) presented a structural transformation method for perfect inventory control; however, Häggblom and Waller (1990) and Yang et al. (1990) have pointed out that when inventory control dynamics are included, this method is not valid except when inputs for inventory control are not changed by transformation. In addition, Häggblom and Waller do not explain clearly why their method is valid for the special cases. Yang et al. (1990) presented the extended method including inventory control dynamics based

on the framework of Häggblom and Waller's method. Although Yang et al.'s method provides a good insight into the effects of internal flow dynamics, the relationships between inputs for inventory control and inputs for composition control should be modified whenever inputs for inventory control are changed by structural transformation.

In this work, a new framework based on the relationships between the COTF's and the MOTF's is presented for the structural transformation of distillation control structures. The framework provides another view of structural transformation for distillation control structures, which has certain theoretical advantages. Using the framework we suggest a simple method of the structural transformation for the general dynamic case including inventory control dynamics. We also demonstrate why Häggblom and Waller's method is valid for the special cases.

Framework for Structural Transformation

Consider a simple distillation column in Figure 1, which may be viewed as a 4×4 system by neglecting the pressure control. Four flows are used usually as inputs or manipulated variables (that is, the reflux flow L , the boilup V , the distillate flow D ,

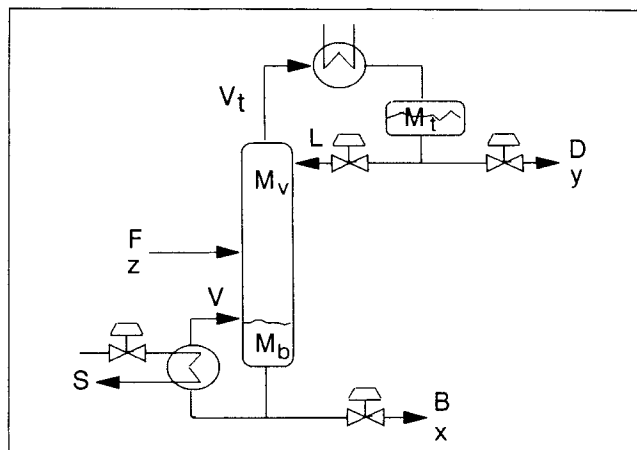


Figure 1. Two product distillation column.

Correspondence concerning this work should be addressed to S. Park.

and the bottom flow B) to keep two inventory outputs (the receiver holdup M_r and the base holdup M_b) and two composition outputs (the top composition y and the bottom composition x). Two out of four inputs are used for inventory control and the other two for composition control. The feed flow F and the feed composition z acts as disturbances.

For a base structure, the complete open-loop relation among the output vector Y , the input vector u , and the disturbance vector d is given by:

$$Y = Gu + Dd \quad (1)$$

Considering inventory and composition loops, we can rewrite Eq. 1 in the following block partitioned form:

$$\begin{pmatrix} Y_c \\ Y_i \end{pmatrix} = \begin{pmatrix} G_{cc} & \dots & G_{ci} \\ G_{ic} & \dots & G_{ii} \end{pmatrix} \begin{pmatrix} u_c \\ u_i \end{pmatrix} + \begin{pmatrix} D_c \\ D_i \end{pmatrix} d \quad (2)$$

where subscripts c and i stand for composition and inventory, respectively. Similarly, the complete open-loop relation for an arbitrary new structure is given by:

$$\begin{pmatrix} Y_c \\ Y_i \end{pmatrix} = \begin{pmatrix} G'_{cc} & \dots & G'_{ci} \\ G'_{ic} & \dots & G'_{ii} \end{pmatrix} \begin{pmatrix} u'_c \\ u'_i \end{pmatrix} + \begin{pmatrix} D_c \\ D_i \end{pmatrix} d \quad (3)$$

Note that d is independent of control structures while u depends on control structures. The block element matrices G_{ic} , G_{ii} and D_i of the COTF's G and D include fast integrating dynamics, and can be obtained directly from plant tests. On the other hand, G_{cc} , G_{ci} , and D_c have much slower nonintegrating dynamics. Therefore, it is difficult to find G_{cc} , G_{ci} , and D_c experimentally, because Y_i violates inventory constraints before Y_c approaches the steady state when step changes in u or d are introduced.

For this reason, the modified open-loop system shown in Figure 2 is considered. For the base structure, modified open-loop relationships among the composition output vector Y_c , the composition input vector u_c , and d are represented using the MOTF's L_{cc} and L_{cd} as follows:

$$Y_c = L_{cc}u_c + L_{cd}d \quad (4)$$

where

$$L_{cc} = (\partial Y_c / \partial u_c)_d \text{ and } L_{cd} = (\partial Y_c / \partial d)_{u_c}.$$

Similarly, modified open-loop relationships for the new structure are represented using the new MOTF's L'_{cc} and L'_{cd} as follows:

$$Y_c = L'_{cc}u'_c + L'_{cd}d \quad (5)$$

where

$$L'_{cc} = (\partial Y_c / \partial u'_c)_d \text{ and } L'_{cd} = (\partial Y_c / \partial d)_{u'_c}.$$

By structural transformation what we are trying to accomplish is to obtain L'_{cc} and L'_{cd} from L_{cc} , L_{cd} , and some additional

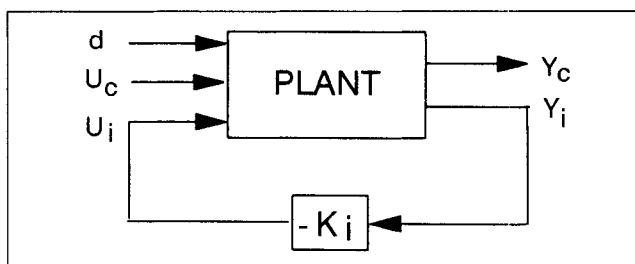


Figure 2. Conceptual diagram for the modified open-loop system.

information of the base structure. For example, Häggblom and Waller (1988, 1990) used the relations among inputs for inventory control, inputs for composition control, and disturbances as the additional information:

$$u_i = M_{ic}u_c + M_{id}d \quad (6)$$

where

$$M_{ic} = (\partial u_i / \partial u_c)_d \text{ and } M_{id} = (\partial u_i / \partial d)_{u_c}.$$

Figure 3 shows the block diagram for the modified open-loop system in Figure 2. If u' and u are related by the transformation matrix H as:

$$\begin{pmatrix} u'_c \\ u'_i \end{pmatrix} = \begin{pmatrix} H_{cc} & \dots & H_{ci} \\ H_{ic} & \dots & H_{ii} \end{pmatrix} \begin{pmatrix} u_c \\ u_i \end{pmatrix} \quad (7)$$

then, from Eqs. 3 and 7, Figure 3 can also be represented in terms of G' , D , H and K_i as shown in Figure 4. These equivalent block diagrams provide a clear insight into the principle of structural transformation. Based on Figure 4 we investigated the relations between the COTF's and the MOTF's. Y_c can be regarded as the function of u_c , d and u'_c , that is, $Y_c = Y_c(u_c, d, u'_c)$ where u_c and d are independent variables while u'_c depends on both u_c and d . Note that regarding Y_c as the function of u'_c makes it easy to analyze the relationships between the MOTF's used in Häggblom and Waller's approach and the COTF's. Applying the chain rule of partial differentiation gives:

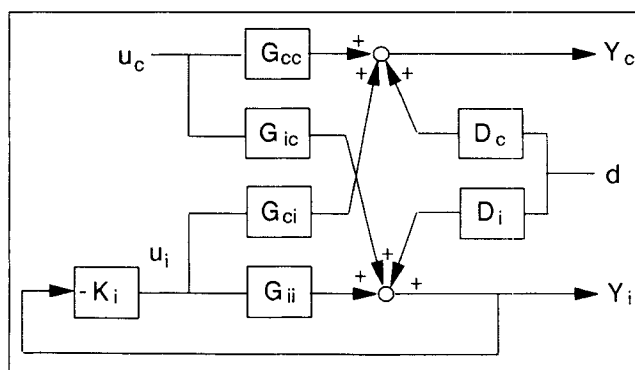


Figure 3. Modified open-loop system represented in terms of G and D .

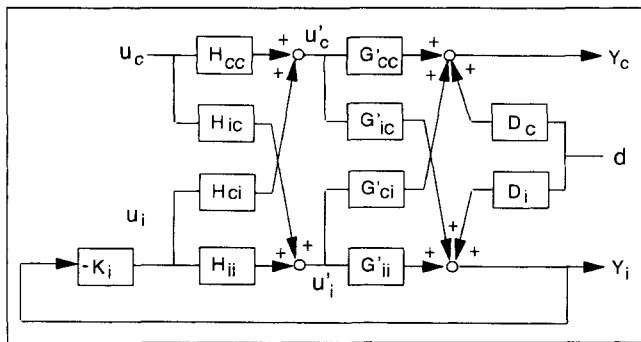


Figure 4. Modified open-loop system represented in terms of H , G' , and D .

$$(\partial Y_c / \partial u_c)_d = (\partial Y_c / \partial u_c)_{d,u'_c} + (\partial Y_c / \partial u'_c)_{d,u_c} (\partial u'_c / \partial u_c)_d \quad (8)$$

$$(\partial Y_c / \partial d)_{u_c} = (\partial Y_c / \partial d)_{u_c,u'_c} + (\partial Y_c / \partial u'_c)_{d,u_c} (\partial u'_c / \partial d)_{u_c} \quad (9)$$

The relations between the MOTF's of the base structure and the COTF's of the new structure can now be derived from Eqs. 8 and 9. From Figure 4 and the definitions of the MOTF's L_{cc} , L_{cd} , M_{ic} , and M_{id} , Eqs. 8 and 9 become:

$$L_{cc} = \{ G'_{ci} (I + H_{ii} K_i G'_{ii})^{-1} H_{ic} \} + \{ G'_{cc} - G'_{ci} (I + H_{ii} K_i G'_{ii})^{-1} H_{ii} K_i G'_{ic} \} (H_{cc} + H_{ci} M_{ic}) \quad (10)$$

$$L_{cd} = \{ D_c - G'_{ci} (I + H_{ii} K_i G'_{ii})^{-1} H_{ii} K_i D_i \} + \{ G'_{cc} - G'_{ci} (I + H_{ii} K_i G'_{ii})^{-1} H_{ii} K_i G'_{ic} \} (H_{ci} M_{id}) \quad (11)$$

The relations between the MOTF's of the new structure and the COTF's of the new structure can also be derived from Eqs. 10 and 11. If $H_{cc} = H_{ii} = I$ and $H_{ci} = H_{ic} = 0$, then L'_{cc} and L'_{cd} are identical to L_{cc} and L_{cd} , respectively. Substituting these conditions into Eqs. 10 and 11 yields:

$$L'_{cc} = G'_{cc} - G'_{ci} (I + K_i G'_{ii})^{-1} K_i G'_{ic} \quad (12)$$

$$L'_{cd} = D_c - G'_{ci} (I + K_i G'_{ii})^{-1} K_i D_i \quad (13)$$

Transformation for the General Case

In the general case where inventory control dynamics are included, as seen from Eqs. 10–13, it is difficult to obtain the MOTF's of the new structure (L'_{cc} and L'_{cd}) from the MOTF's of the base structure (L_{cc} , L_{cd} , M_{ic} , and M_{id}) alone. Thus, Häggblom and Waller's method is no longer valid. Fortunately, however, the peculiar characteristics of distillation columns make the situations somewhat simple if the LV structure is chosen as the base structure.

If we choose the LV structure as the base structure, then G_{ci} becomes a null matrix because u_i (D and B) has no effect on Y_c (y and x) when the mixing dynamics in the accumulators are neglected. Therefore, from Figure 3, we can see that L_{cc} and L_{cd} are identical with G_{cc} and D_c , respectively.

$$G_{cc} = L_{cc} \quad (14)$$

$$D_c = L_{cd} \quad (15)$$

Therefore, we can determine G_{cc} and D_c by obtaining L_{cc} and L_{cd} experimentally. Furthermore, we can also obtain G_{ic} , G_{ii} , and D_i experimentally. Thus, the COTF's G and D can be completely determined by knowing L_{cc} , L_{cd} , G_{ic} , G_{ii} , and D_i . Once G and D are determined, structural transformation into any new structure is straightforward. If u and u' are related by the transformation matrix P as:

$$\begin{pmatrix} u_c \\ u_i \end{pmatrix} = \begin{pmatrix} P_{cc} & \cdots & P_{ci} \\ \vdots & \ddots & \vdots \\ P_{ic} & \cdots & P_{ii} \end{pmatrix} \begin{pmatrix} u'_c \\ \vdots \\ u'_i \end{pmatrix} \quad (16)$$

then the MOTF's L'_{cc} and L'_{cd} of the new structure can be derived from block diagram algebra as follows:

$$L'_{cc} = G_{cc} P_{cc} - G_{cc} P_{ci} S'_i (G_{ic} P_{cc} + G_{ii} P_{ic}) \quad (17)$$

$$L'_{cd} = D_c - G_{cc} P_{ci} S'_i D_i \quad (18)$$

where

$$S'_i = K_i \{ I + (G_{ic} P_{ci} + G_{ii} P_{ii}) K_i \}^{-1} \quad (19)$$

Note that for the case where the nonlinear relationships among inputs are desired (for example, the ratio of flow rates) P becomes partial derivatives at the nominal operation condition.

Transformation for the Special Cases

In this section, using the relationships between the COTF's and the MOTF's we analyze Häggblom and Waller's method and demonstrate the validity of their method for the special cases.

Inventory loops perfectly controlled

Perfect inventory control may be often a good approximation since the inventory dynamics are much faster than the composition dynamics. For the perfect inventory control case, Eqs. 12 and 13 reduce to:

$$L'_{cc} = G'_{cc} - G'_{ci} G'_{ii}^{-1} G'_{ic} \quad (20)$$

$$L'_{cd} = D_c - G'_{ci} G'_{ii}^{-1} D_i \quad (21)$$

Furthermore, the terms in Eqs. 8 and 9 become:

$$(\partial Y_c / \partial u_c)_{d,u'_c} = 0 \quad (22)$$

$$(\partial Y_c / \partial u'_c)_{d,u_c} = G'_{cc} - G'_{ci} G'_{ii}^{-1} G'_{ic} \quad (23)$$

$$(\partial Y_c / \partial d)_{u_c,u'_c} = D_c - G'_{ci} G'_{ii}^{-1} D_i \quad (24)$$

Using the results of Eqs. 20–24, we can rewrite Eqs. 10 and 11 more compactly as:

$$L_{cc} = L'_{cc} (H_{cc} + H_{ci} M_{ic}) \quad (25)$$

$$L_{cd} = L'_{cd} + L'_{cc} H_{ci} M_{id} \quad (26)$$

Equations 25 and 26 are readily rearranged as follows:

Table 1. UCSB Simulation Model of LV Structure for Impurity Control*

$$Y_c = \begin{bmatrix} \Delta y \\ \Delta x \end{bmatrix}, \quad Y_i = \begin{bmatrix} \Delta M_i \\ \Delta M_b \end{bmatrix}, \quad u_c = \begin{bmatrix} \Delta L \\ \Delta V \end{bmatrix}, \quad u_i = \begin{bmatrix} \Delta D \\ \Delta B \end{bmatrix}, \quad d = \begin{bmatrix} \Delta F \\ \Delta z \end{bmatrix}$$

$$L_{cc} = \begin{bmatrix} \frac{-3.58e^{-2.1s}}{19.2s+1} & \frac{3.38e^{-2.2s}}{19.8s+1} \\ \frac{13.9e^{-1.2s}}{13.2s+1} & \frac{-18.9e^{-0.6s}}{12.6s+1} \end{bmatrix}, \quad L_{cd} = \begin{bmatrix} \frac{-0.515e^{-3.7s}}{27.6s+1} & \frac{23.1e^{-4.9s}}{22.8s+1} \\ \frac{9.97e^{-0.4s}}{10.8s+1} & \frac{-213e^{-1.5s}}{14.5s+1} \end{bmatrix}$$

$$G_{ic} = \begin{bmatrix} \frac{-0.775}{s} & \frac{0.818}{s} \\ \frac{0.775}{s} & \frac{-0.818}{s} \end{bmatrix}, \quad G_{ii} = \begin{bmatrix} \frac{-1.0}{s} & 0 \\ 0 & \frac{-1.0}{s} \end{bmatrix}, \quad D_i = \begin{bmatrix} \frac{0.038}{s} & \frac{-1.2}{s} \\ \frac{0.962}{s} & \frac{1.2}{s} \end{bmatrix}, \quad K_i = \begin{bmatrix} \frac{-1.0}{1.14} & 0 \\ 0 & \frac{-1.0}{1.75} \end{bmatrix}$$

* Time constants and time delays are expressed in minutes; all inventory-controlled variables are in terms of moles; the unit of P -controller is min^{-1} ; all composition gains have been multiplied by 10^3 .

$$L'_{cc} = L_{cc}(H_{cc} + H_{ci}M_{ic})^{-1} \quad (27)$$

$$L'_{cd} = L_{cd} - L'_{cc}H_{ci}M_{id} \quad (28)$$

moles are used for inventory control loops instead of levels used in the original work by Yang et al. (1990).

Consider transformation from LV structure to DV structure. u and u' are:

$$u_c = \begin{pmatrix} \Delta L \\ \Delta V \end{pmatrix}, \quad u_i = \begin{pmatrix} \Delta D \\ \Delta B \end{pmatrix}, \quad u'_c = \begin{pmatrix} \Delta D \\ \Delta V \end{pmatrix}, \quad u'_i = \begin{pmatrix} \Delta L \\ \Delta B \end{pmatrix} \quad (29)$$

Thus, the transformation matrix P is:

$$P_{cc} = P_{ii} = \begin{pmatrix} 0 & 0 \\ 0 & 1 \end{pmatrix}, \quad P_{ci} = P_{ic} = \begin{pmatrix} 1 & 0 \\ 0 & 0 \end{pmatrix} \quad (30)$$

L'_{cc} and L'_{cd} obtained by the proposed method are given in Table 2. The open-loop responses of the DV structure were also investigated using the MOTF's obtained by structural transformation for the two cases: 1. the case with the assumption of perfect inventory control; 2. the case without the assumption of perfect inventory control. Figure 5 shows the open-loop responses of the top and bottom compositions to a step change of $\Delta V = 0.1$ mol/min. The dynamic responses with and without the assumption of perfect inventory control are different significantly. In this case, we may have severe troubles when we design composition control loops based on the perfect inventory control.

The results show that L'_{cc} and L'_{cd} can be obtained from L_{cc} , L_{cd} , M_{ic} , and M_{id} . This approach clearly explains why Häggblom and Waller's method is valid under the assumptions of steady state or perfect inventory control.

Inputs for inventory control unchanged

Consider the case where inventory control dynamics are included, but inputs for inventory control are not changed by transformation ($H_{ic} = 0$ and $H_{ii} = I$). Substituting $H_{ic} = 0$ and $H_{ii} = I$ into Eqs. 10 and 11, and using Eqs. 12 and 13, we can easily show that Eqs. 10 and 11 readily reduce to Eqs. 25 and 26, respectively. Thus, Häggblom and Waller's approach is still valid.

Example: Transformation from LV to DV Structure

The dynamic model based on the UCSB simulation model (Yang, 1991) was used to confirm the proposed method. The model is shown in Table 1. G_{ic} , G_{ii} , D_i and K_i were derived from M_{ic} , M_{id} , and the parameters of P -controllers in the Yang model (1991) by using the properties of internal flow dynamics in distillation columns. For simplicity, holdups in terms of

Table 2. MOTF's of DV Structure Obtained by Structural Transformation

$$\begin{bmatrix} \Delta y \\ \Delta x \end{bmatrix} = \begin{bmatrix} \frac{4.62e^{-2.1s}}{(19.2s+1)(1.47s+1)} & \frac{3.38e^{-2.2s}}{(19.8s+1)} + \frac{-3.78e^{-2.1s}}{(19.2s+1)(1.47s+1)} \\ \frac{-17.9e^{-1.2s}}{(13.2s+1)(1.47s+1)} & \frac{-18.9e^{-0.6s}}{(12.6s+1)} + \frac{14.7e^{-1.2s}}{(13.2s+1)(1.47s+1)} \end{bmatrix} \begin{bmatrix} \Delta D \\ \Delta V \end{bmatrix}$$

$$+ \begin{bmatrix} \frac{-0.515e^{-3.7s}}{(27.6s+1)} + \frac{-0.176e^{-2.1s}}{(19.2s+1)(1.47s+1)} & \frac{23.1e^{-4.9s}}{(22.8s+1)} + \frac{5.54e^{-2.1s}}{(19.2s+1)(1.47s+1)} \\ \frac{9.97e^{-0.4s}}{(10.8s+1)} + \frac{0.685e^{-1.2s}}{(13.2s+1)(1.47s+1)} & \frac{-213e^{-1.5s}}{(14.5s+1)} + \frac{-21.5e^{-1.2s}}{(13.2s+1)(1.47s+1)} \end{bmatrix} \begin{bmatrix} \Delta F \\ \Delta z \end{bmatrix}$$

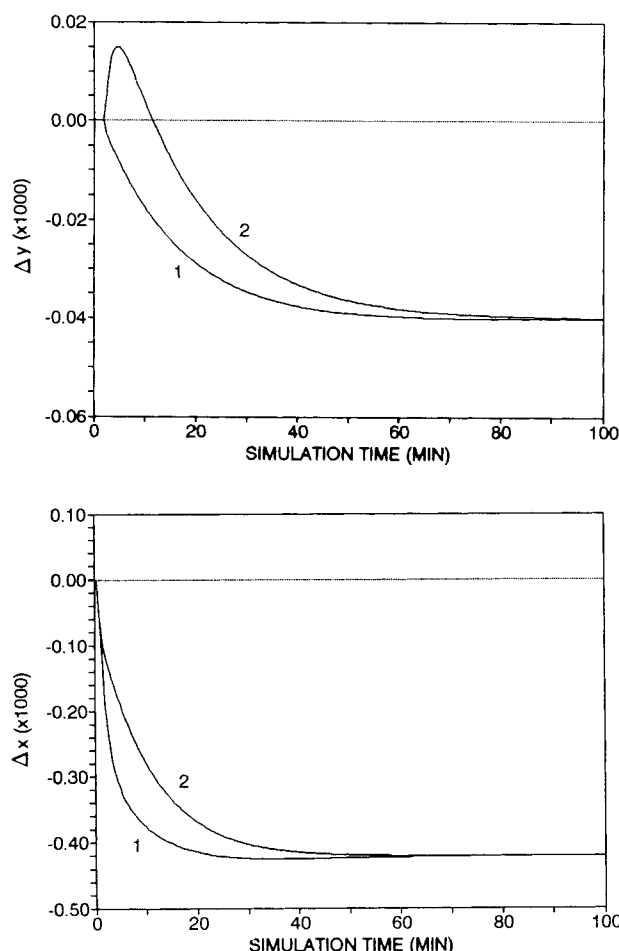


Figure 5. Open-loop responses of DV structure for a step change of $\Delta V = 0.1$ mol/min using the MOTF's obtained by structural transformation.

1. with the assumption of perfect inventory control; 2. without the assumption of perfect inventory control.

Acknowledgment

The authors gratefully acknowledge financial support from the Yukong Limited and the Korea Ministry of Science and Technology. We also would like to thank Professor Duncan A. Mellichamp who reviewed this work and Dr. Dae R. Yang for their valuable comments.

Notation

- B = bottom flow rate, mol/min
- d = disturbance vector
- D = complete open-loop transfer function between disturbances and outputs where all inventory and composition loops are open
- D = distillate flow rate, mol/min
- F = feed flow rate, mol/min
- G = complete open-loop transfer function between inputs and outputs where all inventory and composition loops are open
- H = transformation matrix
- I = identity matrix
- K_i = controller for inventory loops, min^{-1}
- L = reflux flow rate, mol/min
- L = modified open-loop transfer function between inputs (or disturbances) and outputs where inventory loops are closed
- M = modified open-loop transfer function between inputs for composition control (or disturbances) and inputs for inventory control where inventory loops are closed
- M_r, M_b = liquid holdup in the receiver and the base, respectively, mol
- P = transformation matrix
- u = input or manipulated variable vector
- V = boilup rate, mol/min
- x = bottom composition, mol fraction
- y = top composition, mol fraction
- Y = output vector or controlled variable vector
- z = feed composition, mol fraction

Superscripts

- ' = new control structure

Subscripts

- c = index for composition
- i = index for inventory

Literature Cited

- Hägglom, K. E., and K. V. Waller, "Transformation and Consistency Relations of Distillation Control Structures," *AIChE J.*, **34**, 1634 (1988).
- Hägglom, K. E., and K. V. Waller, "Control Structures for Disturbance Rejection and Decoupling of Distillation," *AIChE J.*, **36**, 1107 (1990).
- Skogestad, S., and M. Morari, "Control Configuration Selection for Distillation Columns," *AIChE J.*, **33**, 1620 (1987).
- Yang, D. R., personal communication (1991).
- Yang, D. R., K. V. Waller, D. E. Seborg, and D. A. Mellichamp, "Dynamic Structural Transformations for Distillation Control Configurations," *AIChE J.*, **36**, 1391 (1990).

Manuscript received Mar. 25, 1991, and revision received Aug. 29, 1991.